

PFAS in Michigan Fish



Eat Safe Fish

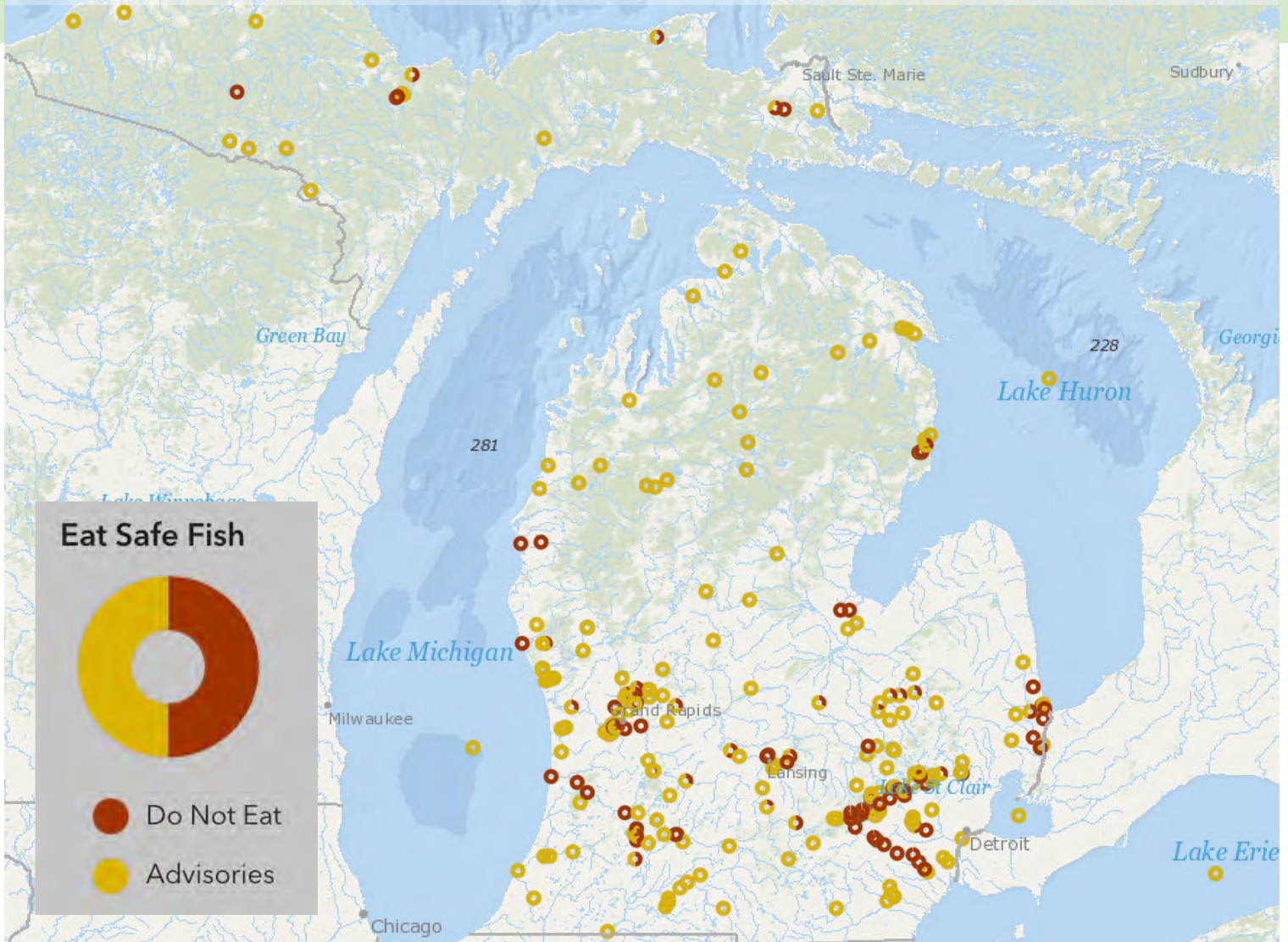
About PFAS in Fish

PFAS chemicals do not break down in the environment and continue to contaminate waters across Michigan due to industrial pollution, wastewater discharge, and military activities. PFAS are linked to a range of serious health problems. The state currently issues guidance only for PFOS in fish, not for total PFAS levels. While PFOS is one of the most studied PFAS compounds, it is just one of many PFAS compounds found to accumulate in fish. Of those tested so far, there are more than 100 water bodies in Michigan in which it is unsafe to eat even a single fish, of one or more species, due to PFOS contamination.

'Do Not Eat Fish' advisories and consumption advisories are widespread across the state of Michigan, especially in industrialized areas. Scan QR code to view the interactive PFAS in fish advisory map.



Scan Me



ECOLOGYCENTER
Healthy People, Healthy Planet



more info at ecocenter.org

glpan.org

PFAS in Michigan Fish



Eat Safe Fish

Southeast Michigan Region

'Do Not Eat Fish' warnings and consumption advisories are widespread across Michigan, especially in industrialized areas. Scan the QR code below to view the interactive PFAS in fish advisory map.



Scan Me

Eat Safe Fish

- Do Not Eat
- Advisories
- Both

Southeast Michigan Region

Counties:	Lapeer
Monroe	Genessee
Lenawee	Shiawassee
Wayne	Sanilac
Washtenaw	Tuscola
Livingston	Saginaw
Oakland	Midland
Macomb	Bay
St. Clair	Huron

This map only reflects warnings & advisories for PFOS contamination. There are additional 'Do Not Eat' warnings and consumption advisories for other chemicals of concern. View the MDHHS Eat Safe Fish Guide for Southeast Michigan for the complete list.



Scan Me

PFAS in Michigan Fish *Southwest Michigan Region*

Southwest Michigan Counties:

Oceana, Newaygo, Mecosta, Isabella, Muskegon, Kent, Montcalm, Gratiot, Ottawa, Ionia, Clinton, Allegan, Barry, Eaton, Ingham, Van Buren, Kalamazoo, Calhoun, Jackson, Berrien, Cass, St. Joseph, Branch, Hillsdale

'Do Not Eat Fish' warnings and consumption advisories are widespread across Michigan, especially in industrialized areas. Scan the QR code to view the interactive PFAS in fish advisory map.



Scan Me

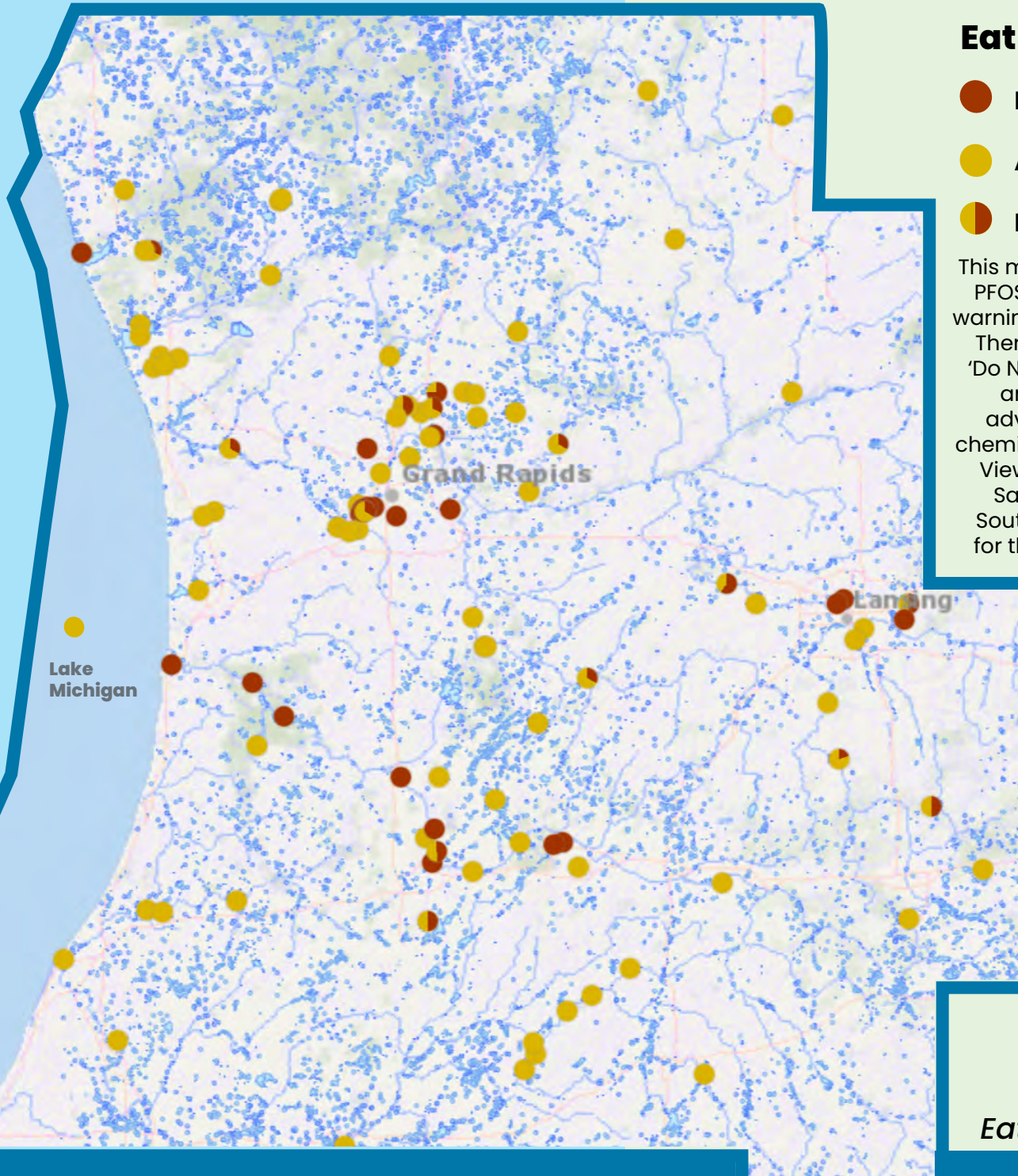
Eat Safe Fish

-  **Do Not Eat**
-  **Advisories**
-  **Both**

This map only reflects PFOS contamination warnings & advisories. There are additional 'Do Not Eat' warnings and consumption advisories for other chemicals of concern. View the MDHHS Eat Safe Fish Guide for Southwest Michigan for the complete list.



Scan Me



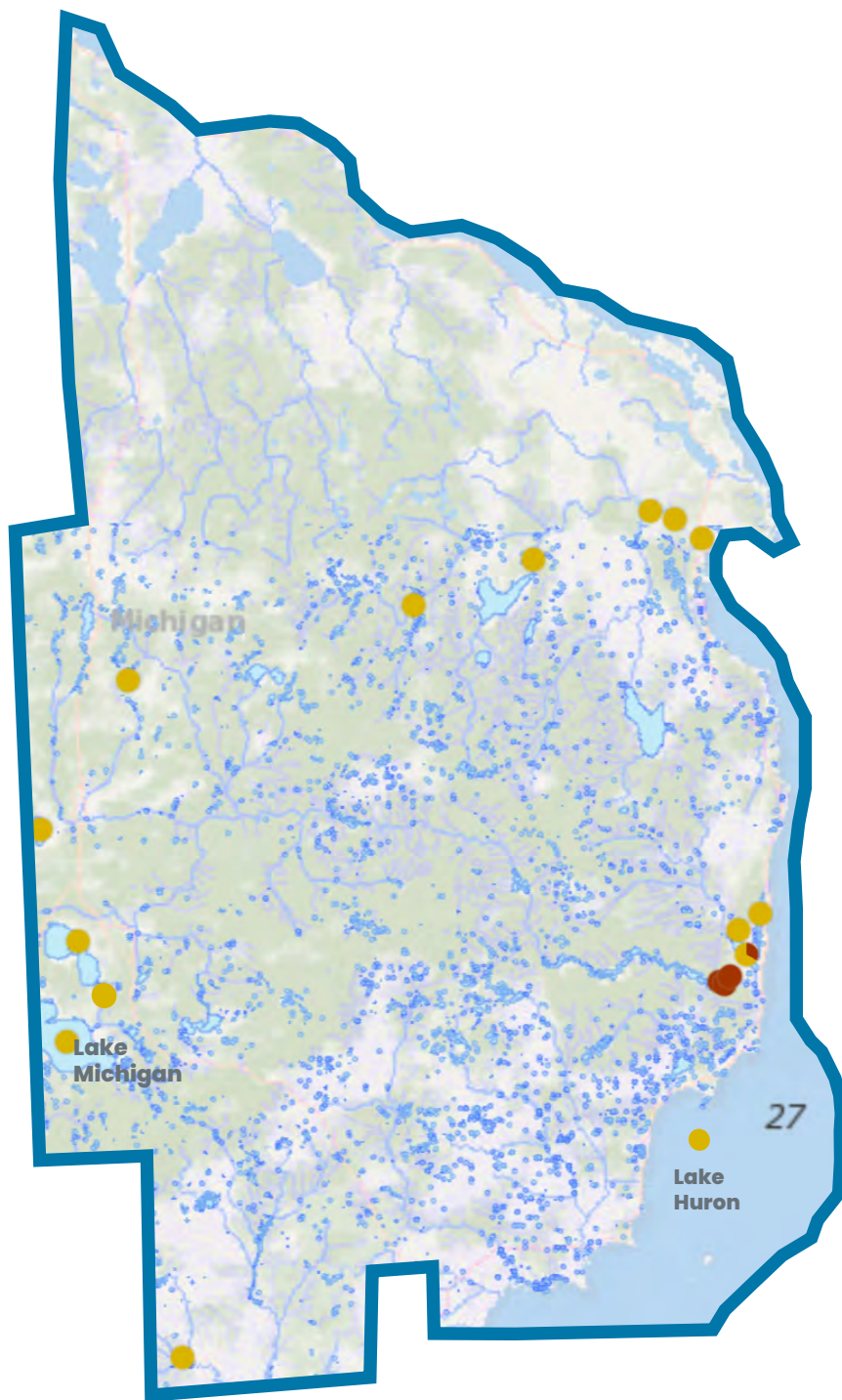
Eat Safe Fish

PFAS in Michigan Fish



Eat Safe Fish

Northeast Michigan Region



'Do Not Eat Fish' warnings and consumption advisories are widespread across Michigan, especially in industrialized areas. Scan the QR code below to view the interactive PFAS in fish advisory map.



Scan Me

Eat Safe Fish

- Do Not Eat
- Advisories
- Both

Northeast Michigan Region

Counties:	Oscoda
Cheboygan	Alcona
Presque Isle	Roscommon
Otsego	Ogemaw
Montmorency	Iosco
Alpena	Gladwin
Crawford	Arenac



Scan Me

This map only reflects warnings and advisories for PFOS contamination. There are additional 'Do Not Eat' warnings and consumption advisories for other chemicals of concern. View the MDHHS Eat Safe Fish Guide for Northeast Michigan for the complete list.



ECOLOGYCENTER
Healthy People, Healthy Planet



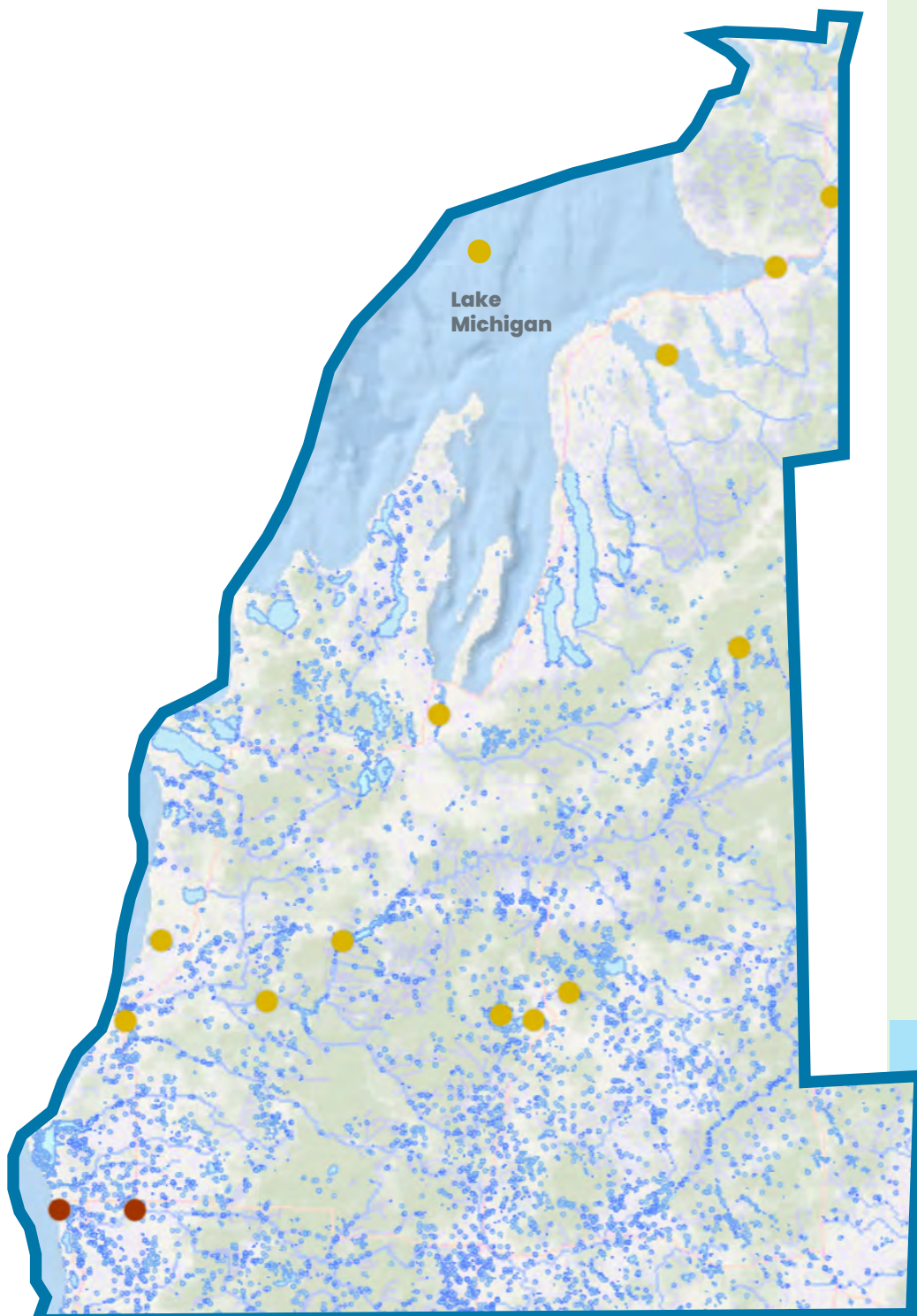
more info at ecocenter.org
glpan.org

PFAS in Michigan Fish



Eat Safe Fish

Northwest Michigan Region



'Do Not Eat Fish' warnings and consumption advisories are widespread across Michigan, especially in industrialized areas. Scan the QR code below to view the interactive PFAS in fish advisory map.



Scan Me

Eat Safe Fish

- Do Not Eat
- Advisories
- Both

Northwest Michigan Region

Counties:

- | | |
|----------------|-----------|
| Emmet | Manistee |
| Charlevoix | Wexford |
| Antrim | Missaukee |
| Leelanau | Mason |
| Kalkaska | Lake |
| Grand Traverse | Osceola |
| Benzie | Clare |

This map only reflects warnings and advisories for PFOS contamination. There are additional 'Do Not Eat' warnings and consumption advisories for other chemicals of concern. View the MDHHS Eat Safe Fish Guide for Northwest Michigan for the complete list.



Scan Me



ECOLOGYCENTER
Healthy People, Healthy Planet



more info at ecocenter.org
glpan.org